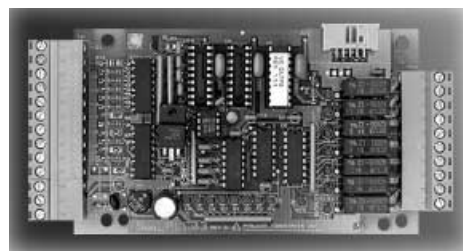




Specifications

PLC03



INPUTS:	8 Optically isolated, 5 to 28 volts, AC or DC (+ or -) (with 2 separate commons, initially connected together) works with PNP and NPN sensors
OUTPUTS:	7 Relay 120VAC, 5A, 1/10HP (SSR optional) (ALL Input, Output AND PWR connectors are removable)
PROGRAMMING:	RLL (Relay Ladder Logic) with labels, rung comments and Software Emulator
DATA EEPROM:	128 locations
PROGRAM STORAGE:	OTP (One Time Programmable)
PROGRAM SIZE:	762 bytes
PROGRAMMING INSTRUCTIONS:	60
DATA REGISTERS:	61, 8 bits, accessible as BITS or BYTES
TIMER/COUNTERS:	16, 8 bits, cascadable OS's (one shot): 24
ANALOG INPUTS:	2 (16 bit mode) OR 4 (8 bit mode) (optional)
ANALOG OUTPUTS:	2, 8 bit (optional)
PID:	optional
SIZE:	3" x 5"
MOUNTING OPTIONS:	"SNAP-TRACK" or stand-offs
OPERATING TEMPERATURE:	0 to +60°C
STORAGE TEMPERATURE:	-40 to +70°C
RELATIVE HUMIDITY:	5% to 95% noncondensing

CUSTOM CONFIGURATIONS AVL, Contact factory with your requirement.

OPTIONAL MODULES:

LCD/KEYPAD (4x20 LCD with BACK-Lit. 16 key keypad)

STEPPER CONTROLLER (25 khz), 24bit position, 16 bit velocity, 8 bit acceleration.

Trajectory programmable thru RLL

USC2000 (Servo Controller) MAX 2 per PLC03

TC/ANALOG module MAX 1 per PLC03

PID module MAX 1 per PLC03 with 2 PID and OUTPUTS for SSR

INPUT Expender (8 input) (utilizing PLC03 or MicroIPC05 as an expender)

OUTPUT Expender (7 outputs if PLC03 used OR 8 outputs, if MicroIPC05 used)

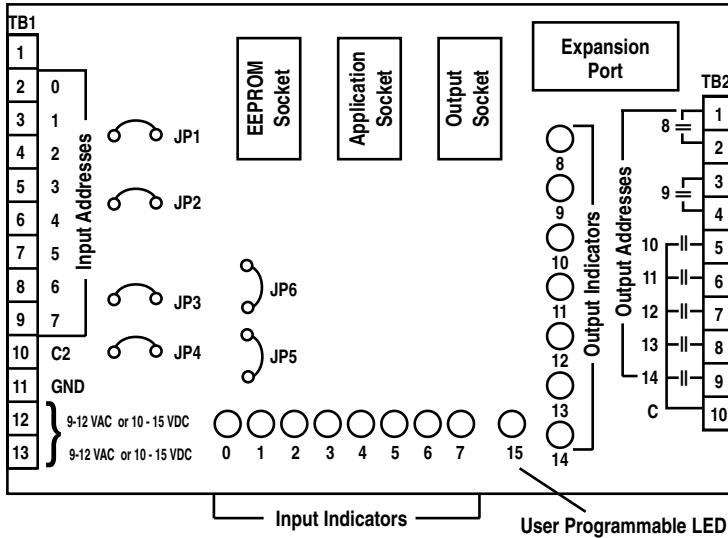
NOTE: modules interconnect thru 10 pin ribbon cable connected to module's "PlcBus" expansion connector.



Specifications

PLC03

SmallPLC03 Board



Jumper Selectable Points Per Common

Cut Jumper	To Use Com 1 with inputs below...	To Use Com 2 with inputs below...
JP1	0, 1, 2, 3	4, 5, 6, 7
JP2	0, 1, 2, 3, 4	5, 6, 7
JP3	0, 1, 2, 3, 4, 5	6, 7
JP4	0, 1, 2, 3, 4, 5, 6	7
None	Both common connected.	
Cut Jumper	For Fast Input #	
JP5	7	
JP6	6	

TB1 connector (Inputs and Power)

1	Input Common #1
2	input 0
3	input 1
4	input 2
5	input 3
6	input 4
7	input 5
8	input 6
9	input 7
10	Input Common #2 (initially connected together)
11	Gnd (DO not connect)
12	Pwr (9-12 VAC or 10 - 15 VDC)
13	Pwr (9-12 VAC or 10 - 15 VDC)

TB2 connector (Outputs)

1	Isolated Relay (address 8)
2	Isolated Relay (address 8)
3	Isolated Relay (address 9)
4	Isolated Relay (address 9)
5	NonIsolated Relay (address 10)
6	NonIsolated Relay (address 11)
7	NonIsolated Relay (address 12)
8	NonIsolated Relay (address 13)
9	NonIsolated Relay (address 14)
10	Output Common for Relays 10, 11, 12, 13 and 14